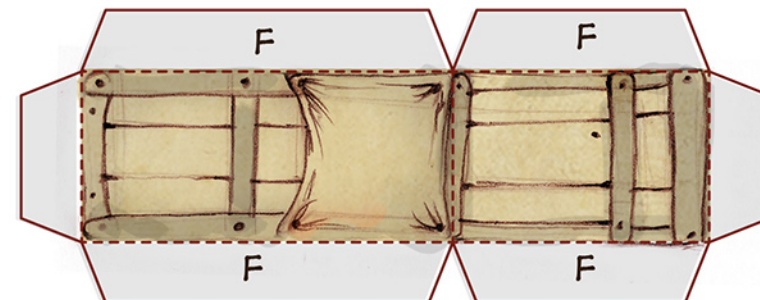


GLUE THE PIECES MARKED "G" TO
CONNECT THE SMALL WHEELS TO
THE FRONT OF THE BIKE.



GLUE THE TABS MARKED "F" TO
THE TOP OF THE BIKE.

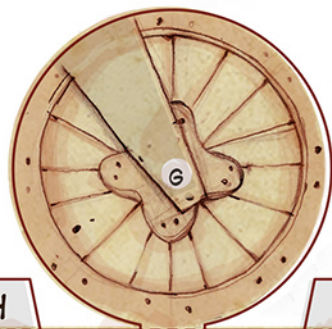
CUT

FOLD

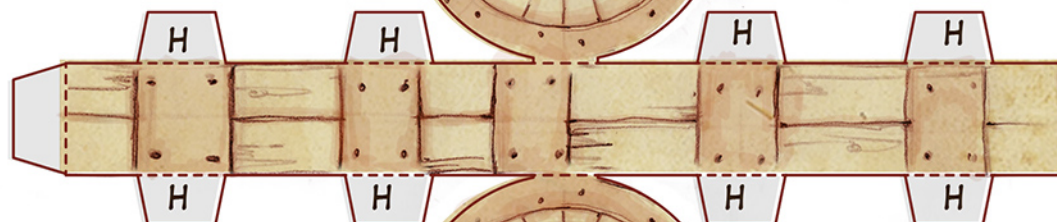
GLUE TAB

BIKE MODEL.

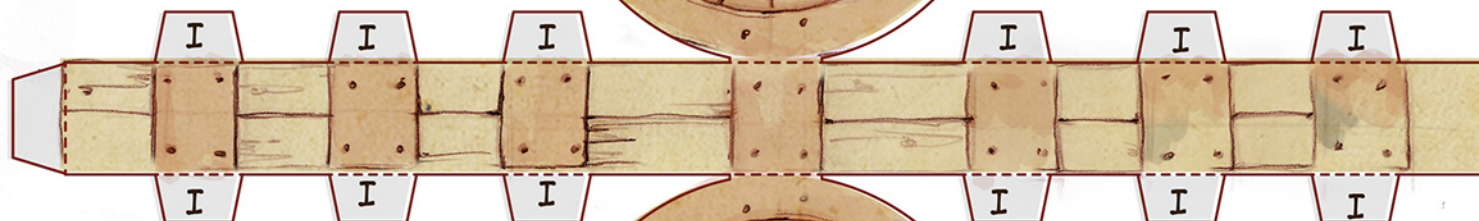
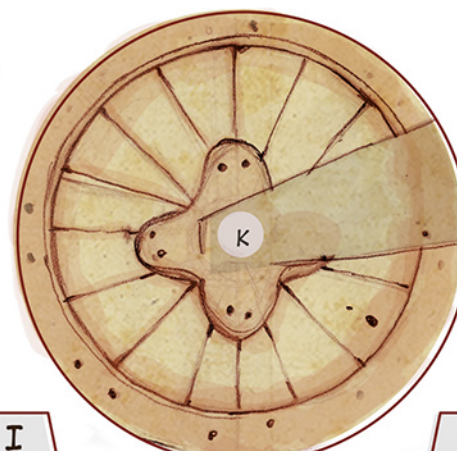
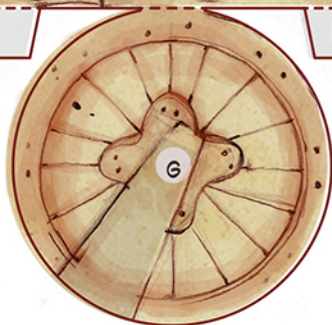
FOLLOW THE INSTRUCTIONS TO BUILD
LEO'S BIKE.



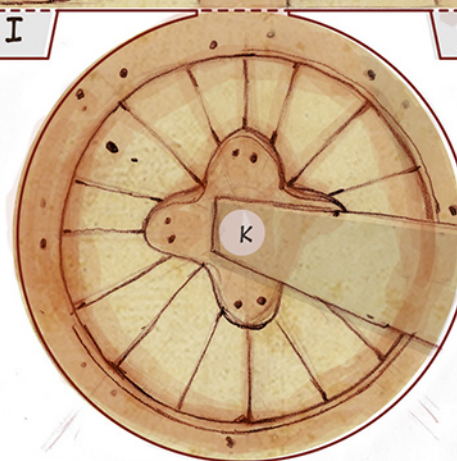
ROLL THIS PIECE INTO A TUBE THEN PLACE
INSIDE THE HANDLEBAR. THEN PUT INTO
THE HOLE MARKED "J".



GLUE THE TABS MARKED
"H" TO THE INSIDE OF THE
SMALL WHEEL.



GLUE THE
TABS MARKED
"I" TO INSIDE
OF THE LARGE
WHEEL.



GLUE THE PIECES MARKED
"K" TO CONNECT THE
LARGE WHEELS TO THE
BACK OF THE BIKE.

